

Eaton Environmental Rack Monitor



Features

- Monitors temperature and humidity at two locations in a rack and the status of up to four additional input contact sensor devices
- Protects critical assets from heat, humidity, smoke, water leaks or intrusion
- Displays real-time status to a PC, Internet-ready wireless device or Network Management System (NMS) software
- Automatically notifies designated recipients of out-of-range conditions
- Simplifies operations with an intuitive, Web browser interface, rich graphing of data, auto-discovery and auto-aggregation utilities, and more
- Five power supplies available (US/UK/Asia/Australia/IEC C13/C14)
- 1-year warranty

Product Snapshot

Measure ambient temperature and humidity at the rack level.

Monitor the status of up to four additional contact devices/sensors.

Display real-time and historical status of all sensors via the intranet or Internet.

Stay informed of alarms via email, PDA and pager.

Act before problems affect sensitive equipment.

Aggregate real-time information from up to 100 Environmental Rack Monitors in a single Web page.

Yesterday's racks of equipment typically consumed less than 5 kW of power, but new blade servers can push that requirement to more than 20 kW per rack. The heat given off by these high-intensity servers is expected to double in the next 10 years. Even as IT environments are getting hotter, racks and equipment rooms are more tightly packed than ever, leaving less open space for air circulation.

The result is unbalanced airflow and undesirable hot spots in and around sensitive equipment. It has been found that heat-related issues are to blame for 60 percent of hardware downtime.

Other environmental threats—such as humidity, water leaks, smoke and cabinet intrusion—can be equally harmful to mission critical data equipment if the rack environment isn't supervised locally.



Powering Business Worldwide

Introducing the Environmental Rack Monitor

Around-the-Clock Monitoring of Environmental Conditions at the Rack Level

The Eaton Environmental Rack Monitor (ERM) continuously monitors environmental conditions at the rack level, providing an extra level of security for critical assets. The primary application is for high-density data centers, but this compact, full-featured unit can monitor conditions in laboratories, hospitals, warehouses, libraries, museums and any other indoor location where the environment must be maintained within acceptable levels.

In the typical rack application, the 0U-size rack monitor base unit can be placed horizontally or vertically in any unused space in the rack. This base unit supports up to two combination temperature and humidity sensor units (known as TH-Modules) that can be placed anywhere in the enclosure. Each hot-swappable TH-Module can support up to two additional input contact sensor devices, for a total of eight sensors per rack monitor. The standard package come with one TH-Module. Additional TH-Modules and sensors can be purchased separately. The ERM also supports third party contact sensors.

View real-time environmental conditions.

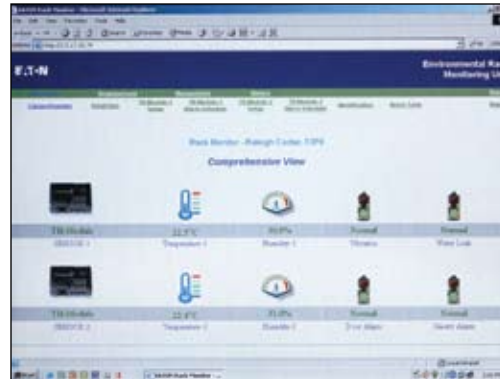
Simply point your Web browser to the IP address of the unit for a display of current status—temperature, humidity and the status of contact sensors. You can access this password-protected information from a PC or workstation, Internet-ready wireless device or SNMP management software.

Use an intuitive, visual interface.

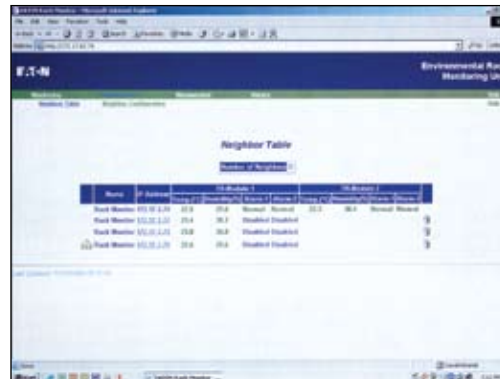
The monitor has a built-in Web server; no external software is required except a standard Web browser. A clean, user-friendly interface, coupled with context-sensitive online help, makes it easy to navigate and use system features.

View the status of up to 100 racks on one screen—an Eaton exclusive.

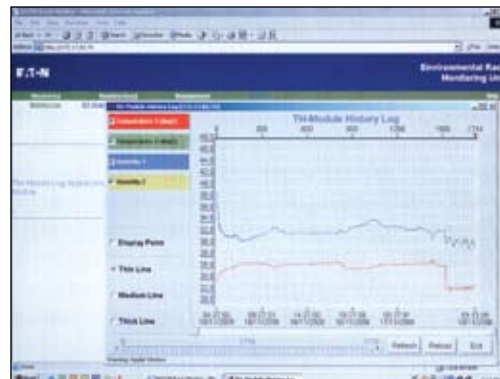
The Environmental Rack Monitor can automatically aggregate information from up to 100 monitors on a single Web page. A built-in, auto-discovery feature scans the network (or a range of IP addresses you specify), automatically finds other rack monitors in that domain, and displays their status in one table. This feature is not available on competitors' monitors.



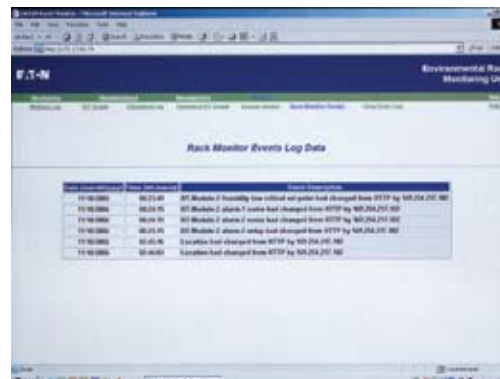
Displays real-time status to a PC, Internet-ready wireless device or Network Management System (NMS) software using SNMP traps. A MIB is provided.



Aggregates real-time information from up to 100 Environmental Rack Monitors in a single Web page.



Simplifies operations with an intuitive, Web browser interface, rich graphing of data, auto-discovery and auto-aggregation utilities, and more



Onboard flash memory to store historical data and event logs

View real-time environmental conditions at the equipment or asset level.



OU device with its own Web server

Get automated notification of out-of-range conditions.

When acceptable temperature or humidity limits are exceeded, or contact status changes, the monitor automatically logs the event; notifies key personnel by email, PCS digital phone or pager; and can send an SNMP trap to a Network Management System, such as HP OpenView or IBM Tivoli. A full MIB (Management Information Base) is provided.

Install and activate quickly.

The Environmental Rack Monitor and TH-Modules are mounted in unused side or rear channels within rack enclosures, so they don't occupy any space needed for IT equipment. The unit has screw holes for wall-mounting and rubber feet for placement on any flat surface. The TH-Module also comes with a screw hole and matching screws. Device activation is simple and can be done remotely over the network or locally using the serial port.



AC Powered Smoke Detector with Battery Backup

Assess trends over time.

Internal flash memory stores and retains historical environmental data even when the unit is powered off. A rich graphic interface displays historical trends and aids in troubleshooting. This data can be easily downloaded from the device for archiving and further analysis.

Streamline administration with user-friendly utilities.

The unit comes with utilities to enable remote upgrade of firmware in multiple rack monitors in a single broadcast session, and discovery tools to search other rack monitors on the network. The unit can also be rebooted remotely.



Vibration Sensor



Water Leak Sensor

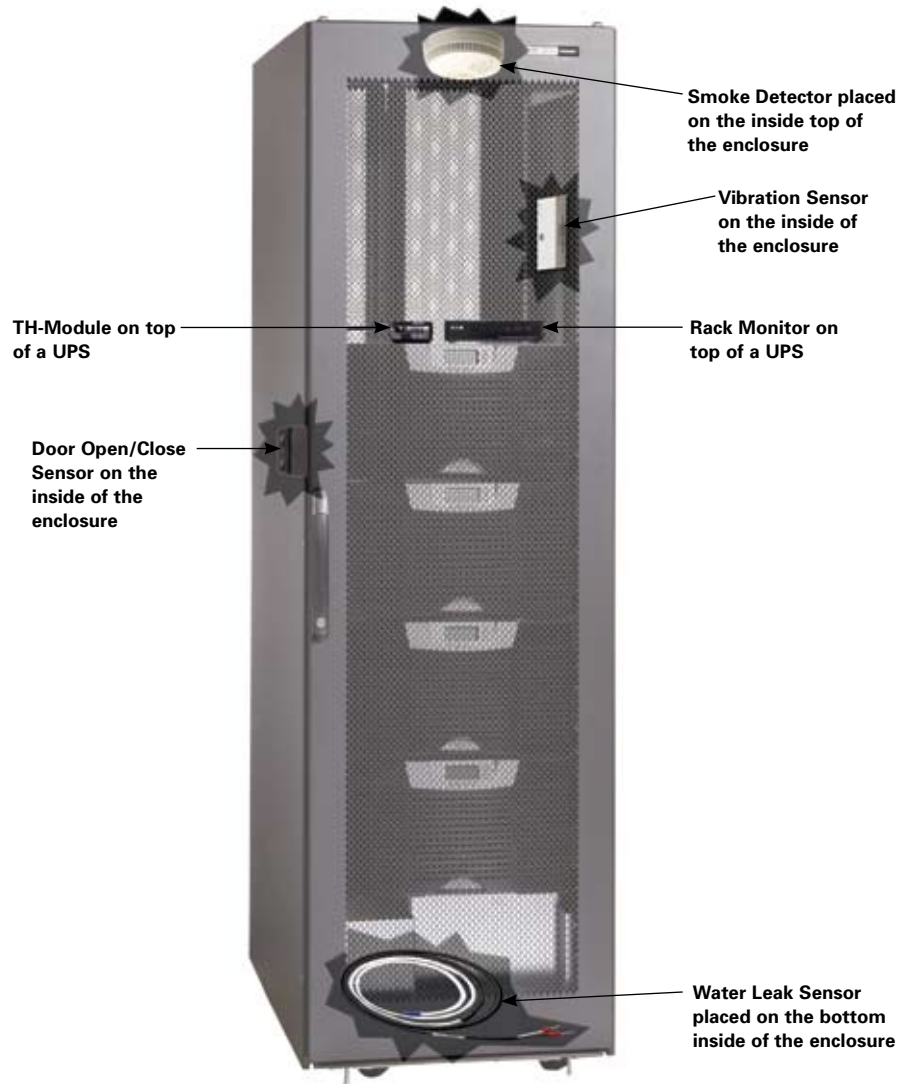


Door Open/Close Sensor

Connect up to two humidity, two temperature and four input contact sensors per monitor for a very cost-effective rack solution. Display color graphs of heat/humidity trends, to identify areas for proactive action.

Count on reliable performance.

Data center solutions, including the Environmental Rack Monitor, have been designed for the rigors of high-density computing environments. For instance, our TH-Module sensors are housed in a rugged protective casing and can be firmly affixed to a rack using its screw-mount hole. Competitors' offerings have flimsy, exposed sensors that hang loose and break easily.



Automatically display the status of up to 100 Rack Monitors in a single Web page.



PowerChain Management®

UNITED STATES
8609 Six Forks Road
Raleigh, NC 27615 U.S.A.
Toll Free: 1.800.356.5794

www.eaton.com/powerquality

CANADA
Ontario: 416.798.0112
Toll free: 1.800.461.9166

LATIN AMERICA
South Cone: 54.11.4124.4000
Brazil: 55.11.3616.8500
Andean & Caribbean:
1.949.452.9610
Mexico & Central America:
52.55.9000.5252

EUROPE/MIDDLE EAST/AFRICA
Denmark: 45.3686.7910
Finland: 358.94.52.661
France: 33.1.6012.7400
Germany: 49.0.7841.604.0
Italy: 39.02.66.04.05.40
Norway: 47.23.03.65.50
Portugal: 55.11.3616.8500
Sweden: 46.8.598.940.00
United Kingdom: 44.1753.608.700

ASIA PACIFIC
Australia: 61.2.9693.9366
New Zealand: 64.0.3.343.3314
China: 86.21.6361.5599
HK/Korea/Taiwan: 852.2745.6682
India: 91.11.4223.2300
Singapore/SEA: 65.6825.1668

Eaton, PowerChain Management is a trade name, trademark, and/or service mark of Eaton Corporation or its subsidiaries and affiliates.

All other trademarks are property of their respective owners.

©2010 Eaton Corporation
All Rights Reserved
Printed in USA
ERM01FXA
May 2010